



Pasta Sheeters
Models PM-CN-0150, 0150-S
Items 44520, 46587
Instruction Manual



STOP
DO NOT RETURN
THIS PRODUCT TO THE STORE

For questions or assistance with this product call OMCAN Toll Free:
1 800 465 0234
Customer Service
or
visit the Support section of
www.omcan.com

Revised - 02/01/2024



Toll Free: 1-800-465-0234
Fax: 905-607-0234
Email: service@omcan.com
www.omcan.com

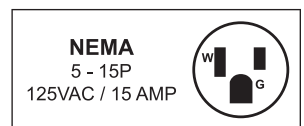


Table of Contents

Model PM-CN-0150 / Model PM-CN-0150-S

Section	Page
General Information -----	3 - 4
Safety and Warranty -----	4 - 5
Technical Specifications -----	6
Operation -----	6
Maintenance -----	7
Parts Breakdown -----	8 - 10
Warranty Registration -----	11



General Information

Omcan Manufacturing and Distributing Company Inc., Food Machinery of America, Inc. dba Omcan and Omcan Inc. are not responsible for any harm or injury caused due to any person's improper or negligent use of this equipment. The product shall only be operated by someone over the age of 18, of sound mind, and not under the influence of any drugs or alcohol, who has been trained in the correct operation of this machine, and is wearing authorized, proper safety clothing. Any modification to the machine voids any warranty, and may cause harm to individuals using the machine or in the vicinity of the machine while in operation.

CHECK PACKAGE UPON ARRIVAL

Upon receipt of an Omcan shipment please inspect for external damage. If no damage is evident on the external packaging, open carton to ensure all ordered items are within the box, and there is no concealed damage to the machine. If the package has suffered rough handling, bumps or damage (visible or concealed), please note it on the bill of lading before accepting the delivery and contact Omcan within 24 hours, so we may initiate a claim with the carrier. A detailed report on the extent of the damage caused to the machine must be filled out within three days, from the delivery date shown in the shipping documents. Omcan has no recourse for damaged products that were shipped collect or third party.

Before operating any equipment, always read and familiarize yourself with all operation and safety instructions.

Omcan would like to thank you for purchasing this machine. It's of the utmost importance to save these instructions for future reference. Also save the original box and packaging for shipping the equipment if servicing or returning of the machine is required.

Omcan Fabrication et distribution Compañie Limité et Food Machinery d'Amérique, dba Omcan et Omcan Inc. ne sont pas responsables de tout dommage ou blessure causé du fait que toute personne ait utilisé cet équipement de façon irrégulière. Le produit ne doit être exploité que par quelqu'un de plus de 18 ans, saine d'esprit, et pas sous l'influence d'une drogue ou d'alcool, qui a été formé pour utiliser cette machine correctement, et est vêtu de vêtements de sécurité approprié. Toute modification de la machine annule toute garantie, et peut causer un préjudice à des personnes utilisant la machine ou des personnes à proximité de la machine pendant son fonctionnement.

VÉRIFIEZ LE COLIS DÈS RÉCEPTION

Dès réception d'une expédition d'Omcan veuillez inspecter pour dommages externes. Si aucun dommage n'est visible sur l'emballage externe, ouvrez le carton afin de s'assurer que tous les éléments commandés sont dans la boîte, et il n'y a aucun dommage dissimulé à la machine. Si le colis n'a subi aucune mauvaises manipulations, de bosses ou de dommages (visible ou cachée), notez-le sur le bond de livraison avant d'accepter la livraison et contactez Omcan dans les 24 heures qui suivent, pour que nous puissions engager une réclamation auprès du transporteur. Un rapport détaillé sur l'étendue des dommages causés à la machine doit être rempli dans un délai de trois jours, à compter de la date de livraison indiquée dans les documents d'expédition. Omcan n'a aucun droit de recours pour les produits endommagés qui ont été expédiés ou cueilli par un tiers transporteur.

General Information

Avant d'utiliser n'importe quel équipement, toujours lire et vous familiariser avec toutes les opérations et les consignes de sécurité.

Omcan voudrais vous remercier d'avoir choisi cette machine. Il est primordial de conserver ces instructions pour une référence ultérieure. Également conservez la boîte originale et l'emballage pour l'expédition de l'équipement si l'entretien ou le retour de la machine est nécessaire.

Omcan Empresa De Fabricacion Y Distribucion Inc. Y Maquinaria De Alimentos De America, Inc. dba Omcan y Omcan Inc. no son responsables de ningun daño o perjuicio causado por cualquier persona inadecuada o el uso descuidado de este equipo. El producto solo podra ser operado por una persona mayor de 18 años, en su sano juicio y no bajo alguna influencia de droga o alcohol, y que este ha sido entrenado en el correcto funcionamiento de esta máquina, y ésta usando ropa apropiada y autorizada. Cualquier modificación a la máquina anula la garantía y puede causar daños a las personas usando la máquina mientras esta en el funcionamiento.

REVISE EL PAQUETE A SU LLEGADA

Tras la recepcion de un envio Omcan favor inspeccionar daños externos. Si no hay daños evidentes en el empaque exterior, Habra el carton para asegurarse que todos los articulos solicitados estén dentro de la caja y no encuentre daños ocultos en la máquina. Si el paquete ha sufrido un manejo de poco cuidado, golpes o daños (visible o oculto) por favor anote en la factura antes de aceptar la entrega y contacte Omcan dentro de las 24 horas, de modo que podamos iniciar una reclamación con la compañía. Un informe detallado sobre los daños causados a la máquina debe ser llenado en el plazo de tres días, desde la fecha de entrega que se muestra en los documentos de envío. Omcan no tiene ningun recurso por productos dañados que se enviaron a recoger por terceros.

Antes de utilizar cualquier equipo, siempre lea y familiarizarse con todas las instrucciones de funcionamiento y seguridad.

Omcan le gustaría darle las gracias por la compra de esta máquina. Es de la mayor importancia para salvar estas instrucciones para futuras consultas. Además, guarda la caja original y el embalaje para el envío del equipo si servicio técnico o devolución de la máquina que se requiere.

Safety and Warranty

WARNING

- Please ensure that the voltage of the outlet matches that of the unit.
- Do not wear long sleeves, necklaces, hoods, or wear long hair loosely as it could cause a hazardous situation.
- If the supply cord is damaged, it must be replaced by Omcan or one of it's qualified service agents.
- The connection must be grounded.



Safety and Warranty

- For indoor use only.
- Ensure that children do not operate or play with the machine.
- To protect against risk of electrical shock do not put any part of the appliance in water or other liquid.
- Unplug from the outlet when not in use, before putting on or taking off parts, and before cleaning.
- Do not leave appliance unattended.
- Switch off the appliance before approaching parts which move in use.

RESIDENTIAL USERS: vendor assumes no liability for parts or labor coverage for component failure or other damages resulting from installation in non-commercial or residential applications. The right is reserved to deny shipment for residential usage; if this occurs, you will be notified as soon as possible.

1 YEAR PARTS AND LABOUR WARRANTY

Within the warranty period, contact Omcan Inc. at 1-800-465-0234 to schedule a drop off to either an Omcan authorized service depot in the area, or to an Omcan Service warehouse to repair the equipment.

Unauthorized maintenance will void the warranty. Warranty covers electrical and part failures, not improper use.

Please see <https://omcan.com/disclaimer> for complete info.

WARNING:

The packaging components are classified as normal solid urban waste and can therefore be disposed of without difficulty.

In any case, for suitable recycling, we suggest disposing of the products separately (differentiated waste) according to the current norms.

DO NOT DISCARD ANY PACKAGING MATERIALS IN THE ENVIRONMENT!

Technical Specifications

Model	PM-CN-0150	PM-CN-0150-S
Color	Red	Silver
Electrical	110-120V / 60Hz / 1	
Roller Width	5.7" / 146mm	
Net Dimensions	11.5" x 9" x 10.9" / 293 x 228 x 278mm	
Packaging Dimensions	11.7" x 9.2" x 11.1" / 298 x 233 x 283mm	
Net Weight	16.5 lbs. / 7.5 kgs.	
Packaging Weight	17.6 lbs. / 8 kgs.	
Item Number	44520	46587

Operation

BEFORE FIRST USE

Clean the machine with a clean, dry cloth before your first use. In order to clean the roller and cutter, you can pass a small quantity of dough through them several times. Then discard the dough.

TO USE

1. Cut the dough into manageable pieces with a knife.
2. Pull the knob and turn to "1", let the two rollers completely open.
3. Put the two covers over the wide and narrow cutters, turn on the switch and pass a piece of dough through the roller. Sprinkle some flour on the dough if necessary.
4. Repeat the operation 2-3 times.
5. When the dough has taken a regular shape, adjust the knob to "2". Then repeat until you achieve the desired thickness.
6. Put the dough into the wide cutter to achieve wide noodles. Alternatively, put the dough into the narrow cutter to achieve narrow noodles.

NOTE

- The roller has 9 thickness settings, there are no definite spacings between each setting as it is dependant on the dough consistency.
- If the cutters can't cut, it means the dough is too soft and you should pass the dough through the rollers with flour several times.
- If the dough is too hard and the machine can't operate, please put the dough into a bowl and mix in more water.
- The work time of the machine cannot exceed 15 minutes at a time.
- Do not adjust the knobs while the machine is in use.

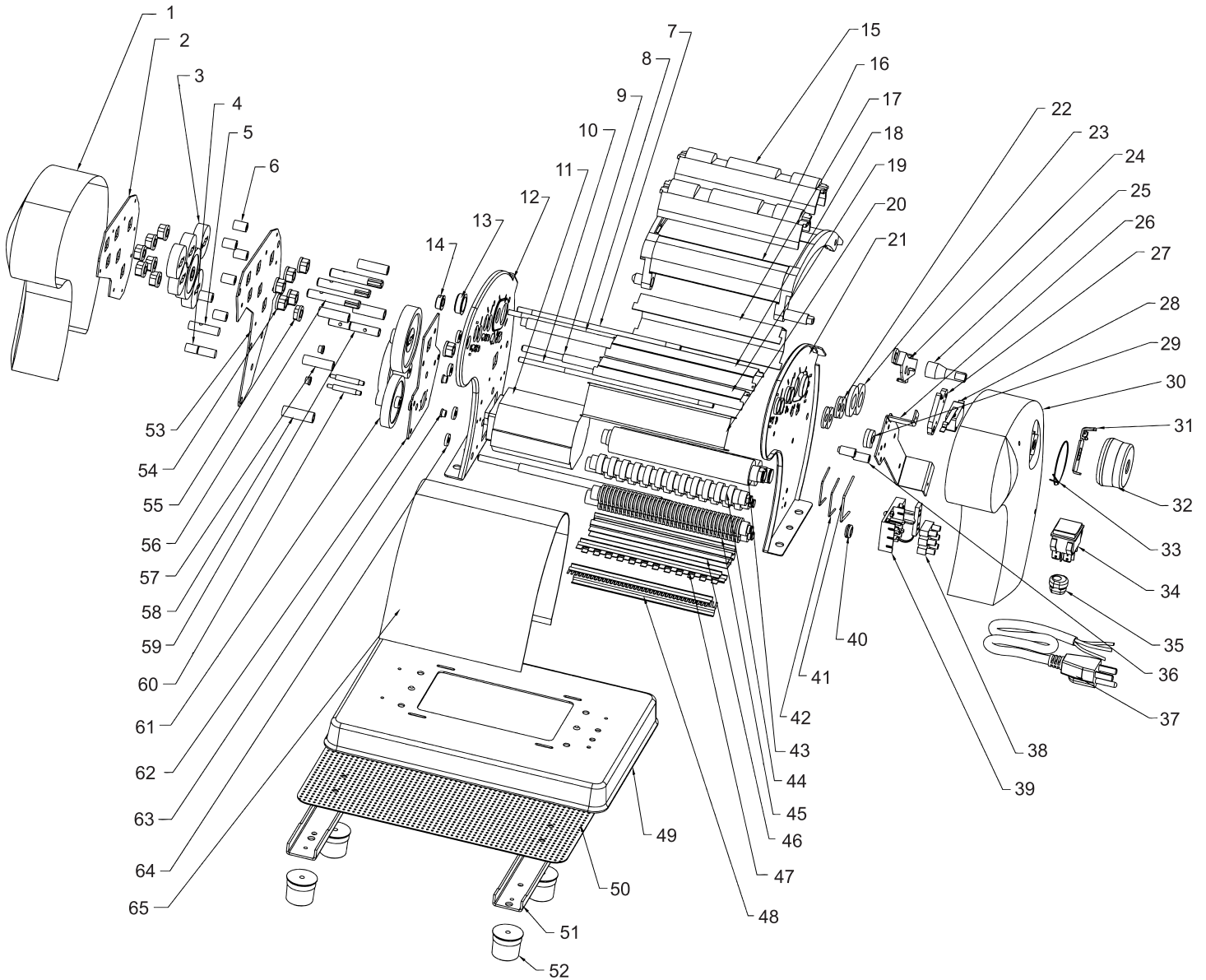
Maintenance

- Unplug the unit before cleaning and performing maintenance.
- Use a soft and dry cloth to clean the machine after use.
- Never wash the machine with water or in a dishwasher.
- Use a brush to clean the cutters and rollers after use.
- If necessary or if the rollers squeak, you can lubricate the rollers with food safe oil.
- Don't insert knives or cloths in between the rollers.
- It is advisable to store the machine and accessories in the original box after using.
- All repairs are to be performed by a qualified technician.
- Do not dismantle the machine, doing so could be hazardous and void the warranty.

Parts Breakdown

Model PM-CN-0150 44520

Model PM-CN-0150-S 46587



Parts Breakdown

Model PM-CN-0150 44520

Item No.	Description	Position	Item No.	Description	Position	Item No.	Description	Position
AI993	Right Cover for 44520	1	AJ015	Roller Gear (2pc) for 44520	23	AJ037	Cutter Chief Axis (2), Cutter Auxiliary (2) for 44520	45
AI994	Gear Rack I, Screw (6pc), Spring Pad (6pc), Flat Pad (6pc) for 44520	2	AJ016	Adjusting Bracket, Nut (2pc), Wedge (21pc) for 44520	24	AJ038	150 Scraping Knife (2pc) for 44520	46
AI995	One Stage Transmission Gear, Two Stage Transmission Gear, Three Stage Transmission Gear (4pc) for 44520	3	AJ017	Eccentric Shaft for 44520	25	AJ039	Combs 6 (2pc) for 44520	47
AI996	Gear Shaft II, Steering Ring (1pc) for 44520	4	AJ018	Left Cover Frame, Screw (2pc), Grooved Metal Gasket (2pc) for 44520	26	AJ040	Combs 2 (2pc) for 44520	48
AI997	Gear Shaft I, Cylindrical Pin (1pc) for 44520	5	AJ019	Switch Frame, Tapping Screw with Pad (2pc) for 44520	27	AJ041	Lampstand for 44520	49
AI998	Shore III (6pc) for 44520	6	AJ020	Touch Switch, Tapping Screw (2pc) for 44520	28	AJ042	Breathable Sheet for 44520	50
AI999	Binding Bolt M5 (2pc) for 44520	7	AJ021	Switch for 44520	29	AJ043	Bottom Board (2pc), Self Tapping Screw (4pc) for 44520	51
AJ000	Eccentric Shaft for 44520	8	AJ022	Left Cover, Tapping Screw (2pc) for 44520	30	AJ044	Straw (4pc), Self Tapping Screw (4pc) for 44520	52
AJ001	M6 Long Double Threaded Screw (2pc) for 44520	9	AJ023	Adjusting Plate for 44520	31	AJ045	Gear Rack II, Nut (3pc), Screw (2pc), Spring Pad (5pc), Flat Pad (5pc) for 44520	53
AJ002	M5 Long Double Threaded Screw for 44520	10	AJ024	Adjusting Handle, Screw (1pc) for 44520	32	AJ046	Inserts (11pc) for 44520	54
AJ003	Electric Motor, Screw (6pc), Spring Pad (4pc) for 44520	11	AJ025	Round Spring for 44520	33	AJ047	Short Sleeve for 44520	55
AJ004	Right Bracket for 44520	12	AJ026	Button Switch (Four Second) for 44520	34	AJ048	Gear Shaft III (3pc), Cylindrical Pin (3pc) for 44520	56
AJ005	Axle Sleeve (2pc) for 44520	13	AJ027	Power Line Deduction (6N-4) for 44520	35	AJ049	Shore I (3pc) for 44520	57
AJ006	Eccentric Bushing for 44520	14	AJ028	Screw Hole Pillar (2pc) for 44520	36	AJ050	Shore II (2pc) for 44520	58
AJ007	Surface Cover (2pc) for 44520	15	AJ029	Power Line for 44520	37	AJ051	Layer of Output Shaft, Cylindrical Pin (2pc), Adjusting Wedge for 44520	59
AJ008	Cover of Forearm, Cover of Rear Arm, Cover of Left Arm, Cover of Right Arm, Screw (4pc) for 44520	16	AJ030	Wiring Terminal, Connecting Line I, Connecting Line II, Connecting Line III, Tapping Screw (2pc) for 44520	38	AJ052	Dowel (2pc), Distance Piece for 44520	60
AJ009	Front Baffle for 44520	17	AJ031	Wire Holder, Screw (2pc) for 44520	39	AJ053	Output Gear, Mid Gear, Helical Gear for 44520	61
AJ010	Mid Baffle for 44520	18	AJ032	Rubber Sleeve for 44520	40	AJ054	Gear Rack III, Screw (5pc), Spring Pad (5pc) for 44520	62
AJ011	Small Intermediate Baffle for 44520	19	AJ033	Roller Spring Clip (2pc) for 44520	41	AJ055	Fixed Plate Set (4pc) for 44520	63
AJ012	Back Baffle for 44520	20	AJ034	Cutter Spring Clip (2pc) for 44520	42	AJ056	Damping Pad (5pc) for 44520	64
AJ013	Left Bracket for 44520	21	AJ035	Roller Chief Axis, Roller Auxiliary Axis, Bulkhead for 44520	43	AJ057	Motor Cover for 44520	65
AJ014	Cutter Gear (4pc), Axial Ring File (4pc) for 44520	22	AJ036	Cutter Chief Axis (6), Cutter Auxiliary (6) for 44520	44			

Parts Breakdown

Model PM-CN-0150-S 46587

Item No.	Description	Position	Item No.	Description	Position	Item No.	Description	Position
AJ058	Right Cover for 46587	1	AJ015	Roller Gear (2pc) for 46587	23	AJ037	Cutter Chief Axis (2), Cutter Auxiliary (2) for 46587	45
AI994	Gear Rack I, Screw (6pc), Spring Pad (6pc), Flat Pad (6pc) for 46587	2	AJ016	Adjusting Bracket, Nut (2pc), Wedge (21pc) for 46587	24	AJ038	150 Scraping Knife (2pc) for 46587	46
AI995	One Stage Transmission Gear, Two Stage Transmission Gear, Three Stage Transmission Gear (4pc) for 46587	3	AJ017	Eccentric Shaft for 46587	25	AJ039	Combs 6 (2pc) for 46587	47
AI996	Gear Shaft II, Steering Ring (1pc) for 46587	4	AJ018	Left Cover Frame, Screw (2pc), Grooved Metal Gasket (2pc) for 46587	26	AJ040	Combs 2 (2pc) for 46587	48
AI997	Gear Shaft I, Cylindrical Pin (1pc) for 46587	5	AJ019	Switch Frame, Tapping Screw with Pad (2pc) for 46587	27	AJ061	Lampstand for 46587	49
AI998	Shore III (6pc) for 46587	6	AJ020	Touch Switch, Tapping Screw (2pc) for 46587	28	AJ042	Breathable Sheet for 46587	50
AI999	Binding Bolt M5 (2pc) for 46587	7	AJ021	Switch for 46587	29	AJ043	Bottom Board (2pc), Self Tapping Screw (4pc) for 46587	51
AJ000	Eccentric Shaft for 46587	8	AJ060	Left Cover, Tapping Screw (2pc) for 46587	30	AJ044	Straw (4pc), Self Tapping Screw (4pc) for 46587	52
AJ001	M6 Long Double Threaded Screw (2pc) for 46587	9	AJ023	Adjusting Plate for 46587	31	AJ045	Gear Rack II, Nut (3pc), Screw (2pc), Spring Pad (5pc), Flat Pad (5pc) for 46587	53
AJ002	M5 Long Double Threaded Screw for 46587	10	AJ024	Adjusting Handle, Screw (1pc) for 46587	32	AJ046	Inserts (11pc) for 46587	54
AJ003	Electric Motor, Screw (6pc), Spring Pad (4pc) for 46587	11	AJ025	Round Spring for 46587	33	AJ047	Short Sleeve for 46587	55
AJ004	Right Bracket for 46587	12	AJ026	Button Switch (Four Second) for 46587	34	AJ048	Gear Shaft III (3pc)-Cylindrical Pin (3pc) for 46587	56
AJ005	Axle Sleeve (2pc) for 46587	13	AJ027	Power Line Deduction (6N-4) for 46587	35	AJ049	Shore I (3pc) for 46587	57
AJ006	Eccentric Bushing for 46587	14	AJ028	Screw Hole Pillar (2pc) for 46587	36	AJ050	Shore II (2pc) for 46587	58
AJ007	Surface Cover (2pc) for 46587	15	AJ029	Power Line for 46587	37	AJ051	Layer of Output Shaft, Cylindrical Pin (2pc), Adjusting Wedge for 46587	59
AJ059	Cover of Forearm, Cover of Rear Arm, Cover of Left Arm, Cover of Right Arm, Screw (4pc) for 46587	16	AJ030	Wiring Terminal, Connecting Line I, Connecting Line II, Connecting Line III, Tapping Screw (2pc) for 46587	38	AJ052	Dowel (2pc), Distance Piece for 46587	60
AJ009	Front Baffle for 46587	17	AJ031	Wire Holder, Screw (2pc) for 46587	39	AJ053	Output Gear, Mid Gear, Helical Gear for 46587	61
AJ010	Mid Baffle for 46587	18	AJ032	Rubber Sleeve for 46587	40	AJ054	Gear Rack III, Screw (5pc), Spring Pad (5pc) for 46587	62
AJ011	Small Intermediate Baffle for 46587	19	AJ033	Roller Spring Clip (2pc) for 46587	41	AJ055	Fixed Plate Set (4pc) for 46587	63
AJ012	Back Baffle for 46587	20	AJ034	Cutter Spring Clip (2pc) for 46587	42	AJ056	Damping Pad (5pc) for 46587	64
AJ013	Left Bracket for 46587	21	AJ035	Roller Chief Axis, Roller Auxiliary Axis, Bulkhead for 46587	43	AJ057	Motor Cover for 46587	65
AJ014	Cutter Gear (4pc), Axial Ring File (4pc) for 46587	22	AJ036	Cutter Chief Axis (6), Cutter Auxiliary (6) for 46587	44			



Warranty Registration

Thank you for purchasing an Omcan product. To register your warranty for this product, complete the information below, tear off the card at the perforation and then send to the address specified below. You can also register online by visiting:

Merci d'avoir acheté un produit Omcan. Pour enregistrer votre garantie pour ce produit, complétez les informations ci-dessous, détachez la carte au niveau de la perforation, puis l'envoyer à l'adresse spécifiée ci-dessous. Vous pouvez également vous inscrire en ligne en visitant:

Gracias por comprar un producto Omcan usted. Para registrar su garantía para este producto, complete la información a continuación, cortar la tarjeta en la perforación y luego enviarlo a la dirección indicada a continuación. También puede registrarse en línea en:

<https://omcan.com/warranty-registration/>

For mailing in Canada

Pour postale au Canada

Por correo en Canadá

OMCAN

PRODUCT WARRANTY REGISTRATION

3115 Pepper Mill Court,
Mississauga, Ontario
Canada, L5L 4X5

For mailing in the US

Pour diffusion aux États-Unis

Por correo en los EE.UU.

OMCAN

PRODUCT WARRANTY REGISTRATION

4450 Witmer Industrial Estates, Unit 4,
Niagara Falls, New York
USA, 14305

or email to: service@omcan.com



Purchaser's Information

Name: _____

Address: _____

City: _____ Province or State: _____ Postal or Zip: _____

Country: _____

Dealer from which Purchased: _____

Dealer City: _____ Dealer Province or State: _____

Invoice: _____

Model Name: _____ Model Number: _____

Machine Description: _____

Date of Purchase (MM/DD/YYYY): _____

Would you like to extend the warranty? Yes No

Company Name: _____

Telephone: _____

Email Address: _____

Type of Company:

Restaurant Bakery Deli

Butcher Supermarket Caterer

Institution (specify): _____

Other (specify): _____

Serial Number: _____

Date of Installation (MM/DD/YYYY): _____

Thank you for choosing Omcan | Merci d'avoir choisi Omcan | Gracias por elegir Omcan



Since 1951 Omcan has grown to become a leading distributor of equipment and supplies to the North American food service industry. Our success over these many years can be attributed to our commitment to strengthen and develop new and existing relationships with our valued customers and manufacturers. Today with partners in North America, Europe, Asia and South America, we continually work to improve and grow the company. We strive to offer customers exceptional value through our qualified local sales and service representatives who provide convenient access to over 6,500 globally sourced products.

Depuis 1951 Omcan a grandi pour devenir un des “leaders” de la distribution des équipements et matériel pour l’industrie des services alimentaires en Amérique du Nord. Notre succès au cours de ces nombreuses années peut être attribué à notre engagement à renforcer et à développer de nouvelles et existantes relations avec nos clients et les fabricants de valeur. Aujourd’hui avec des partenaires en Amérique du Nord, Europe, Asie et Amérique du Sud, nous travaillons continuellement à améliorer et développer l’entreprise. Nous nous efforçons d’offrir à nos clients une valeur exceptionnelle grâce à nos ventes locales qualifiées et des représentants de service qui offrent un accès facile à plus de 6500 produits provenant du monde entier.

Desde 1951 Omcan ha crecido hasta convertirse en un líder en la distribución de equipos y suministros de alimentos en América del Norte industria de servicios. Nuestro éxito en estos años se puede atribuir a nuestro compromiso de fortalecer y desarrollar nuevas relaciones existentes con nuestros valiosos clientes y fabricantes. Hoy con socios de América del Norte, Europa, Asia y América del Sur, que trabajan continuamente para mejorar y crecer la empresa. Nos esforzamos por ofrecer a nuestros clientes valor excepcional a través de nuestro local de ventas y representantes de los servicios que proporcionan un fácil acceso a más de 6,500 productos con origen a nivel mundial.

